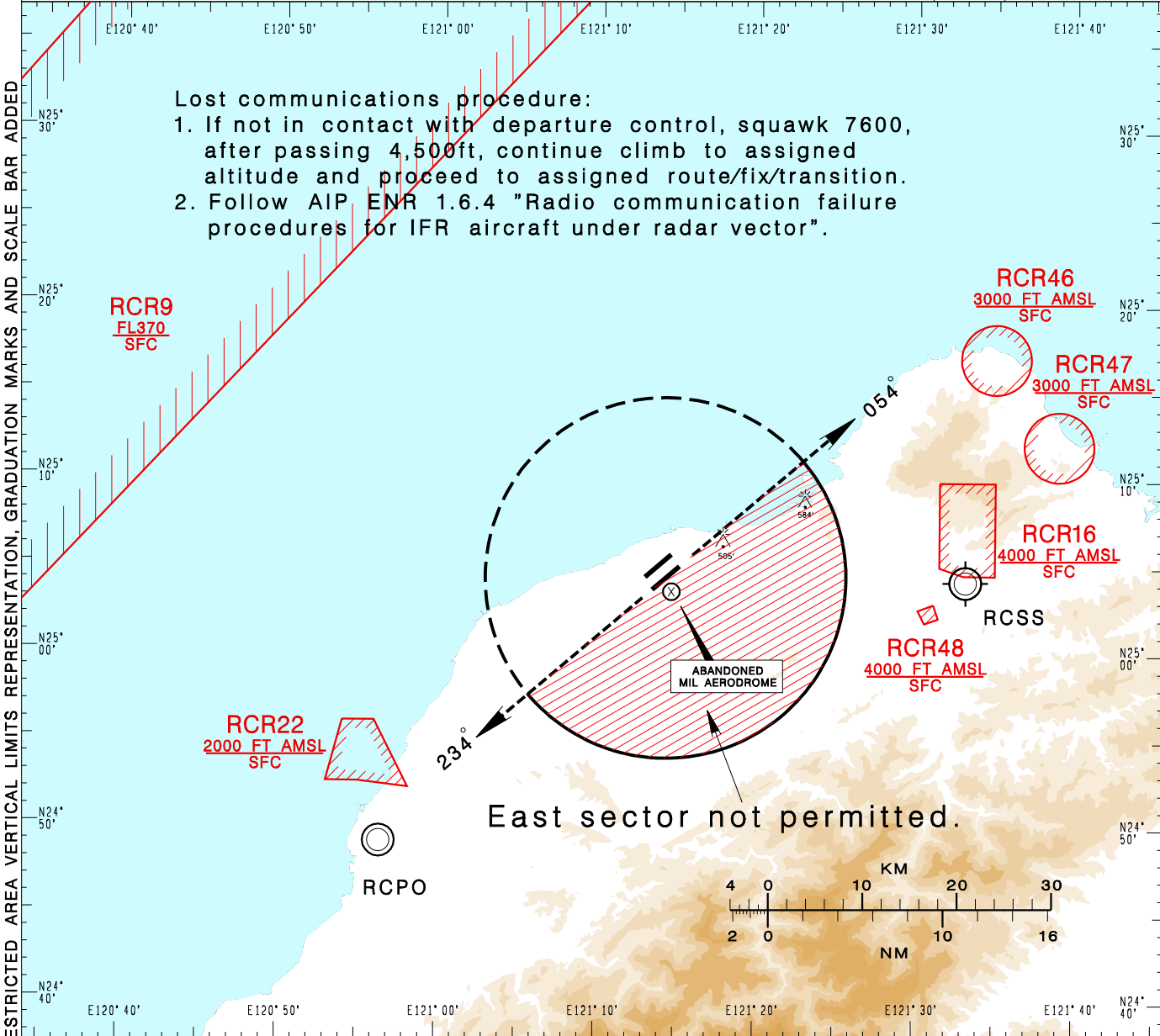


臺灣桃園國際機場
TAIPEI/TAIWAN TAOYUAN INTL AD

RCTP SID
 SPRAY 1A RADAR(RWY05R) SPRAY 1C RADAR(RWY05L)
 SPRAY 1B RADAR(RWY23L) SPRAY 1D RADAR(RWY23R)

TAIPEI APP 125.1 128.5	TAIPEI TWR 118.7 129.3	ATIS 127.6		
Apt Elev: 108'		Trans Level: FL130		Trans Alt: 11,000'
BEARINGS ARE MAGNETIC; DISTANCES ARE NAUTICAL MILES; ELEVATIONS, HEIGHTS IN FEET				



Lost communications procedure:
 1. If not in contact with departure control, squawk 7600, after passing 4,500ft, continue climb to assigned altitude and proceed to assigned route/fix/transition.
 2. Follow AIP ENR 1.6.4 "Radio communication failure procedures for IFR aircraft under radar vector".

East sector not permitted.

CHANGES: NEW PAGE NUMBER, UPDATE RESTRICTED AREA, VERTICAL LIMITS, REPRESENTATION, GRADUATION MARKS AND SCALE BAR ADDED

<p>SPRAY ONE ALFA RADAR DEPARTURE Climb on RWY HDG until 700ft, then turn to assigned heading.</p> <p>SPRAY ONE CHALI RADAR DEPARTURE Climb on RWY HDG until 700ft, then turn to assigned heading.</p>
<p>SPRAY ONE BRAVO RADAR DEPARTURE Climb on RWY HDG until 600ft, then turn to assigned heading.</p> <p>SPRAY ONE DELTA RADAR DEPARTURE Climb on RWY HDG until 600ft, then turn to assigned heading.</p>

NOTE

- No turn before DER.
- East sector is not permitted.
- Minimum climb gradient required as below, if unable, advise ATC:
 RWY 05L: 5.9%(359 ft/NM) until 3000ft.
 RWY 05R: 5.6%(341 ft/NM) until 3000ft.
 RWY 23R: 5.6%(341 ft/NM) until 3000ft.
 RWY 23L: 5.7%(347 ft/NM) until 3000ft.
- Expect radar vectoring by ATC to join the cleared ATS route.
 ATC may assign headings from 054DEG counterclockwise to 234DEG.
- Available hours: 0000-0300, 0600-1000UTC daily; except HDG 054 and HDG 234 no time restriction.